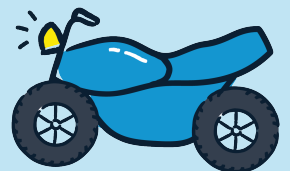
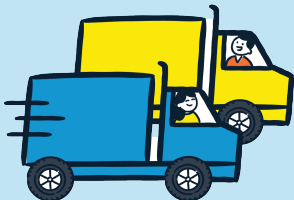




# PARTICIPANT INFORMATION PACK



SUNDAY, 19 FEBRUARY, 2023

AVALON RACEWAY

210 OLD MELBOURNE ROAD, LARA, VIC



## WELCOME FROM OUR CEO

Dear Convoy Participant,

It's finally here!

Welcome to Camp Quality's Geelong Convoy 2023!

We are extremely grateful for the support, commitment, and hard work you have put into fundraising for Camp Quality since you registered for the event. Thank you, and we hope you have a fun-fuelled and safe event.

As you know, Camp Quality raises money to help children, zero to 15 years of age, impacted by cancer, be it their own diagnosis or the diagnosis of someone they love.

We are there for kids and their families from the first experience of cancer, through every stage, from treatment to remission – and in the tragic case of bereavement.

We support kids undergoing treatment in hospital, at home, at school with our cancer education program, and away from it all at our camps and retreats.

We believe in the proven principles of positive psychology: it forms the foundations of everything we do. We also believe laughter and optimism are essential to help our kids and their families build resilience, so that they can cope, and most importantly, thrive.

It is thanks to generous people like you, that we can provide support services and programs across Australia at no cost to our kids and families. To help children facing cancer develop life skills that strengthen their physical and mental wellbeing.

We wish you lots of fun and enjoyment at the event and remember that you are part of a 'Convoy with a purpose' which makes a real difference in children's lives.

Warmest regards,

A handwritten signature in black ink, appearing to read "Deborah Thomas".

Deborah Thomas  
CEO, Camp Quality



## DATE

Sunday, 19 February 2023

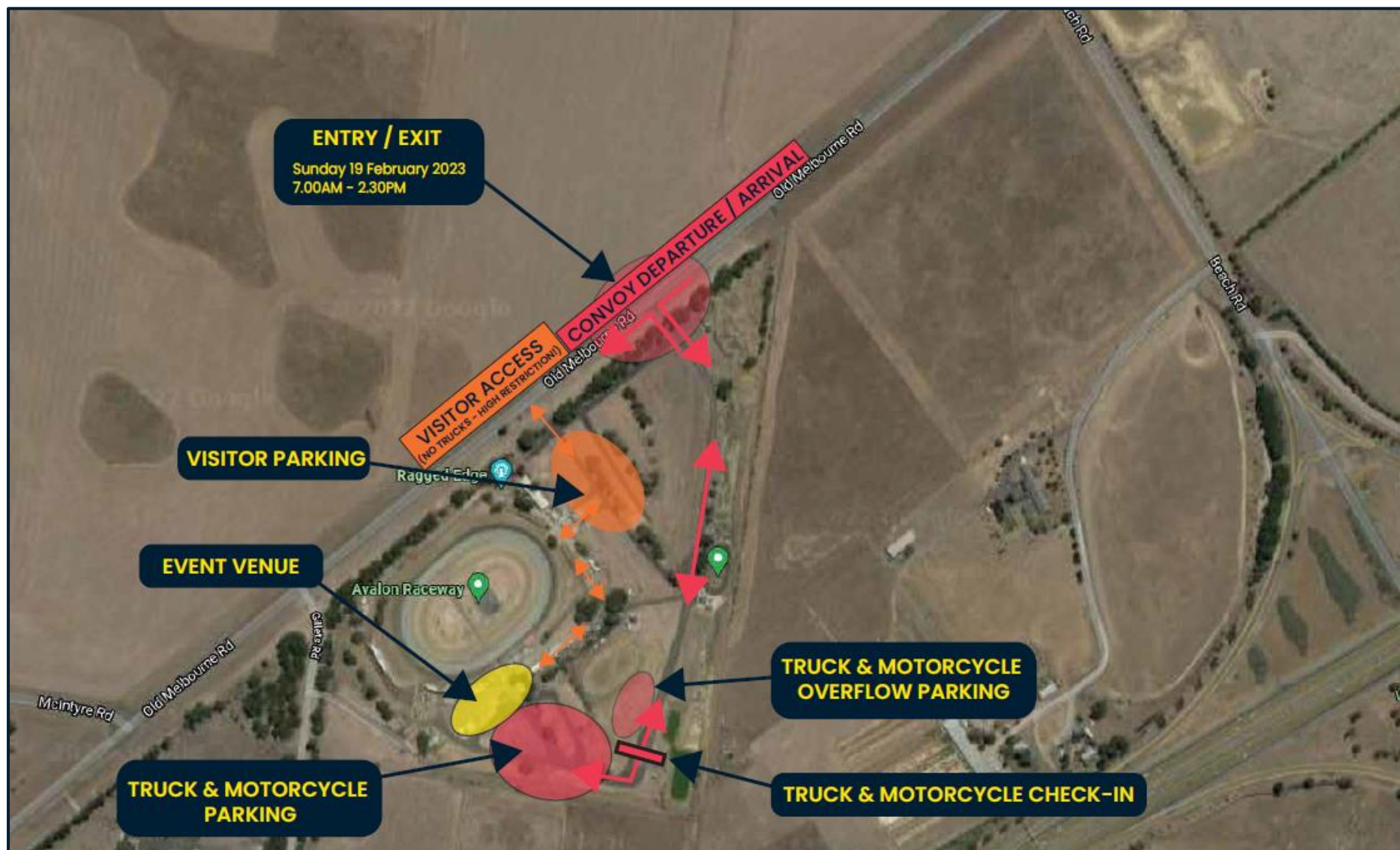
## LOCATION

Avalon Raceway, 210 Old Melbourne Road, Lara, VIC 3212

## TIMINGS

WHEN	WHAT	
7.00am	Doors open	Avalon Raceway opens its doors for you. Drivers and riders need to register at the entrance gate.
8.00am	Driver registrations close	Drivers and riders need to allow enough time to register and find their allocated parking spot.
8.15am	Driver briefing	Compulsory briefing for Convoy participants. Drivers and riders assemble at the stage.
9.00am	Convoy departure	Start your engines! Ensure you are ready for a 9am convoy departure. Please follow volunteer and traffic controller directions.
10.30am	Venue entertainment commences	It is time to enjoy the rides, the music and all the other entertainment! Have fun!
11.00am	Convoy arrival (approx.)	Our convoy is expected to arrive back at Avalon Raceway. Once every vehicle has parked, feel free to check them all out!
12.15pm	Awards ceremony	Join us for the Convoy Awards Ceremony and put your hands together for our top fundraisers!
2.30pm	Event concludes	Thanks so much for coming and for supporting Camp Quality's work! See you next year for another epic Geelong Convoy!

## VENUE OVERVIEW





## VENUE, DETAILED





## ARRIVAL & PARKING

### Convoy participants

Convoy participants need to arrive at Avalon Raceway between 7am and 8am. Please allow some time for the registration process to take place and expect some delays when entering the truck and motorcycle car park. The participant entrance to the venue will be clearly signposted along Old Melbourne Road.

Please **DO NOT** attempt to enter via the visitor car park, as it is height restricted and trucks will not be able to go through the entrance gate.

### Visitors

Visitors will be allocated to a car park which has a separate entrance to the truck and motorcycle car park. The visitor entrance to the venue will be clearly signposted along Old Melbourne Road.

Please DO NOT attempt to enter via the truck and motorcycle entrance, to avoid any congestion. As well, please avoid arriving between 9am and 9.30am, as this is the time the Convoy will leave the venue via Old Melbourne Road and go past the visitor car park entrance.

### Please note:

It is a short, approximately 150m walk from the visitor car park to the event venue. Should you or one of your passengers require closer access due to mobility needs, please proceed to the white ticket booth through the visitor car park and the gravel path. One of our Camp Quality staff, or volunteers will assist you further.

## THE CHECK-IN PROCESS

All truck drivers and motorcycle riders who are participating in the Convoy must check in upon arrival at the venue. After entering the truck and motorcycle entrance to the Avalon Raceway grounds, follow the signs and head to the vehicle parking area. Camp Quality staff or volunteers will greet you at the white ticket booth, where your name and vehicle will be checked. We will be handing out an event identification sign which needs to be displayed on the dashboard of your vehicle (motorcycles excepted). Further to this, we will allocate you to a parking zone (purple, green, or pink zone), we will endeavour to park trucks from same teams/organisations in same zone. Please follow the instructions of our traffic controllers and be kind to them as they volunteer their services to the event.



If you are a driver of a Convoy lead car, lead truck, or you are one of the highest fundraisers, you will be allocated parking space in the blue zone. There is also a designated area for parking motorcycles.

## **EVENT PARTICIPANT BRIEFING**

All truck drivers and motorcycle riders need to attend the safety briefing on site, which will be conducted at approx. 8.15am at the stage. We will provide you with important and up-to-date event and safety related details. After the briefing, there will be sufficient time for you to do some last-minute preparations before the Convoy departs Avalon Raceway at 9am.

## **CONVOY ETIQUETTE**

Geelong Convoy is a community fundraising event which the public associates with the organisation and brand of Camp Quality. As such, Camp Quality expects that participants and visitors display behaviours which are in line with Camp Quality's values, both at the venue AND on-route as part of the event. This includes:

- No alcohol or drugs
- No smoking (including e-cigarettes)
- No aggressive, anti-social and non-inclusive behaviour. It is expected that all people treat each other with respect and be inclusive of Camp Quality's diverse community.
- Appropriate and respectful language and tone

## **SAFETY & PRECAUTIONS**

When driving or riding at the event car park or as part of the Convoy, it is crucial that you consider a few points to ensure everybody involved stays safe. Below is a (non-exhaustive) list of things you must keep in mind when cruising along the road with Convoy.

### Event Parking Areas:

As a Convoy participant, you will be one of many truck drivers and motorcycle riders who try to register for the event, find a park, walk over to the venue, line up for the Convoy departure, come back again and finally, leave the event at the end of the day. You can imagine we will have a lot of vehicle and pedestrian movement happening on event day. Therefore:



- drive and ride at walking speed with your hazard lights turned on!
- have a spotter when reversing!
- follow the instructions of traffic controllers!
- be patient and don't hurry!
- use caution when walking across the parking area! Ensure drivers and riders can see you!
- look after your children and keep them safe!

### Motorcycles:

Please have the following safety considerations at the forefront of your mind when riding the Convoy:

- While many consider riding in a staggered formation safer, it isn't. While it is legal to ride side by side, or in a staggered formation, it is not recommended. A rider may need to avoid a hazard, and when they do, they will take out you and other riders.
- We recommend single file, with a 3 second crash avoidance space (three second gap) between each rider.
- When cornering, don't follow what the rider in front of you does. In other words, don't tip your bike into the corner at the same time they do. You need to tip your bike into the corner when YOU approach the correct point in the corner.
- Manage your road position (buffering). When we talk about positioning for motorbikes, we split the lane into three tracks. Track 3 is nearest the centre line, track 2 the middle of the lane, track 1 is the far left of the lane.

### Trucks:

- Don't get too distracted during the convoy and stay alert even when travelling at low speeds.
- Keep enough distance between trucks.
- Convoy must adhere to existing road rules, no exception has been made for the event. Don't run a red light or a closed railway crossing just to keep up with the truck in front of you.
- Be respectful and keep noise to a minimum when travelling through sensitive areas such as hospitals, aged care homes or equestrian centres.





## COMMUNICATION

Geelong Convey uses UHF radios to communicate between motorcycle riders, truck drivers and the lead cars. Convey participants should tune in to channel 21 during Convey departure, on the road as part of the Convey, and during arrival.

Please follow standard radio etiquette using respectful, non-explicit language.

## ENTERTAINMENT

- Visitors and Convey participants alike will have the opportunity to appreciate all the vehicles at the Show & Shine after the return of the Convey.
- Fire Rescue Victoria will have a display, and there may be one or two other fancy cars to look at.
- There will be kids' entertainment on site such as face painting and a balloon artist.
- We will have live music and a band playing at the event.
- Our Camp Quality puppets will roam the venue to introduce themselves, and they will support the Awards Ceremony on stage.
- Finally, two race cars will take passengers on a few fast laps around the raceway for a fee.

## FOOD & CATERING

The following food and drink options will be on offer to purchase at the event venue:

- BBQ and sausage sizzle (breakfast and lunch)
- Coffee and tea (prior to Convey departure)
- Fairy floss and snow cones

A tap water drink station will be located near the catering area.

EFTPOS accepted but please make sure you also have some cash on you, just in case.

## FIRST AID

The service provider 1300Medic will have a team onsite for the duration of the event and they will be located near the Camp Quality Information Marquee and the visitor entrance to the venue. Please reach out to the qualified first aiders or make contact with one of our Camp Quality staff or volunteers should you require any assistance.



## TOILET FACILITIES

Toilet blocks are situated at the event venue as well as along the footpath between the visitor car park and the venue.

## AWARDS CEREMONY

The Geelong Convoy award ceremony will take place at approximately 12.15pm. Awards will be presented in the following categories:

- Highest Fundraising Individual
- Highest Fundraising Team
- People's Choice Award Truck (people vote during the day)
- Best Fleet Award – chosen by Vera Entwistle (founder) and Deborah Thomas (CEO)
- CEO's Choice Award – chosen by Deborah Thomas (CEO)
- CEO's Recognition Award

## MERCHANDISE

Camp Quality merchandise such as t-shirts, caps, stubbie holders or key rings will be available for purchase at the Camp Quality information marquee.

## FUNDRAISING & DONATIONS

A QR code will be available around the venue for on the day donations.

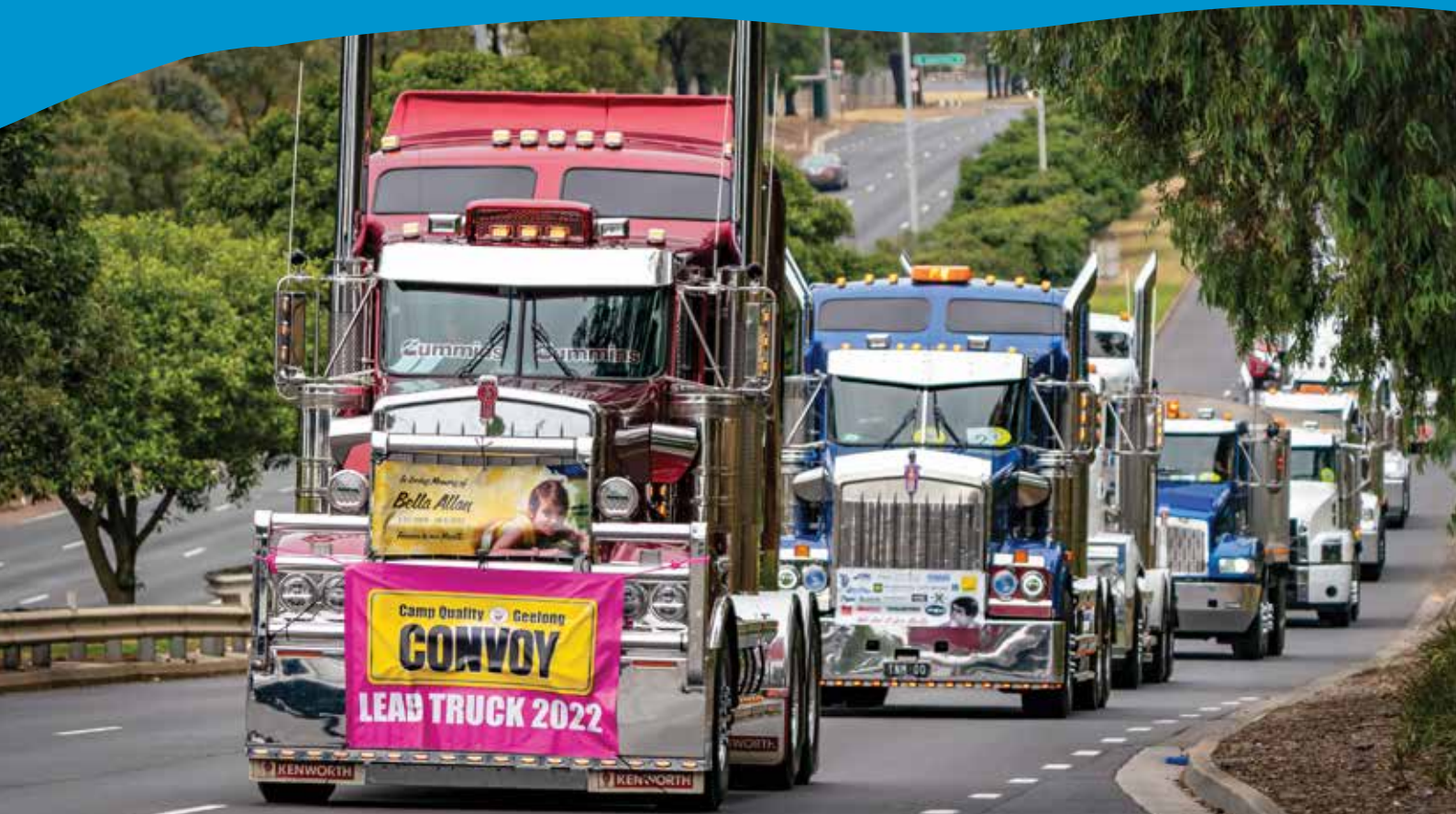
## EVENT SUPPORTERS

Camp Quality is grateful for the support of:





**Sunday 19th February 2023**  
**Avalon Raceway**

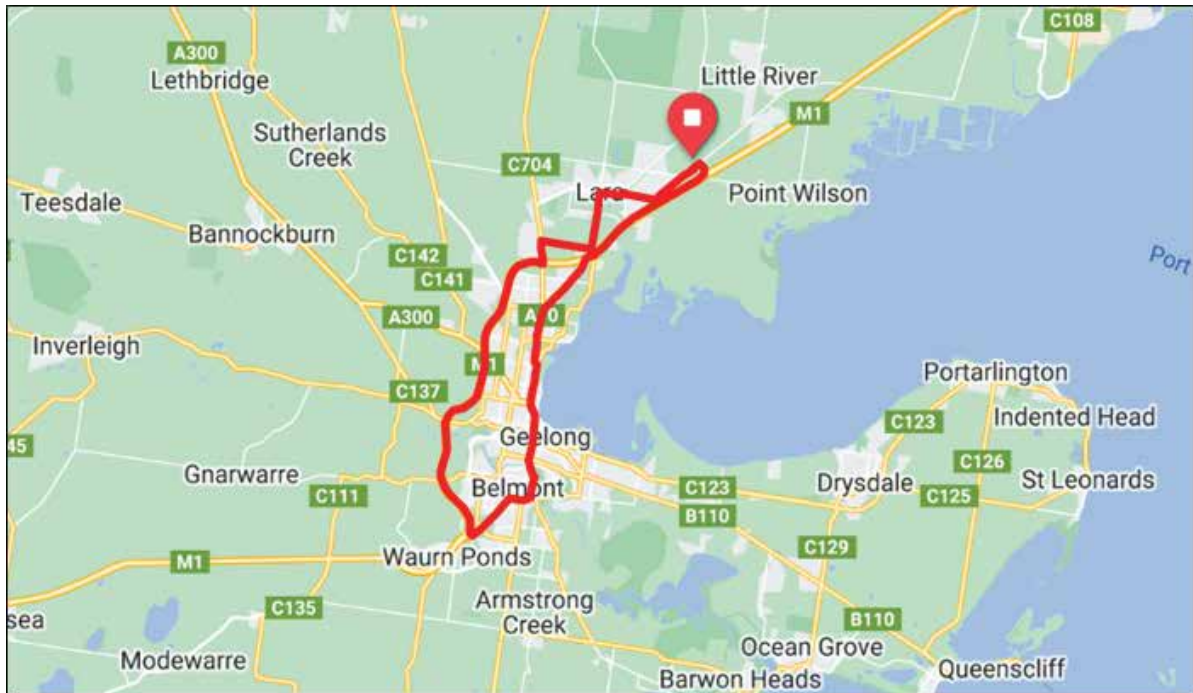


**COURSE MAP**

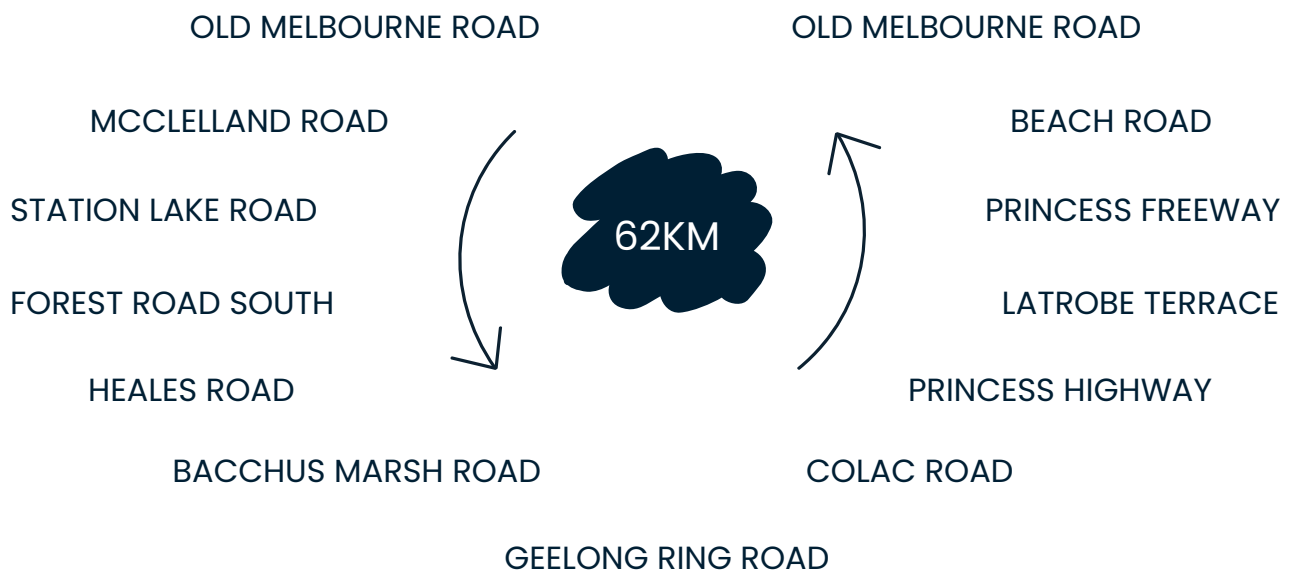
**& cue sheet**



# Course Overview



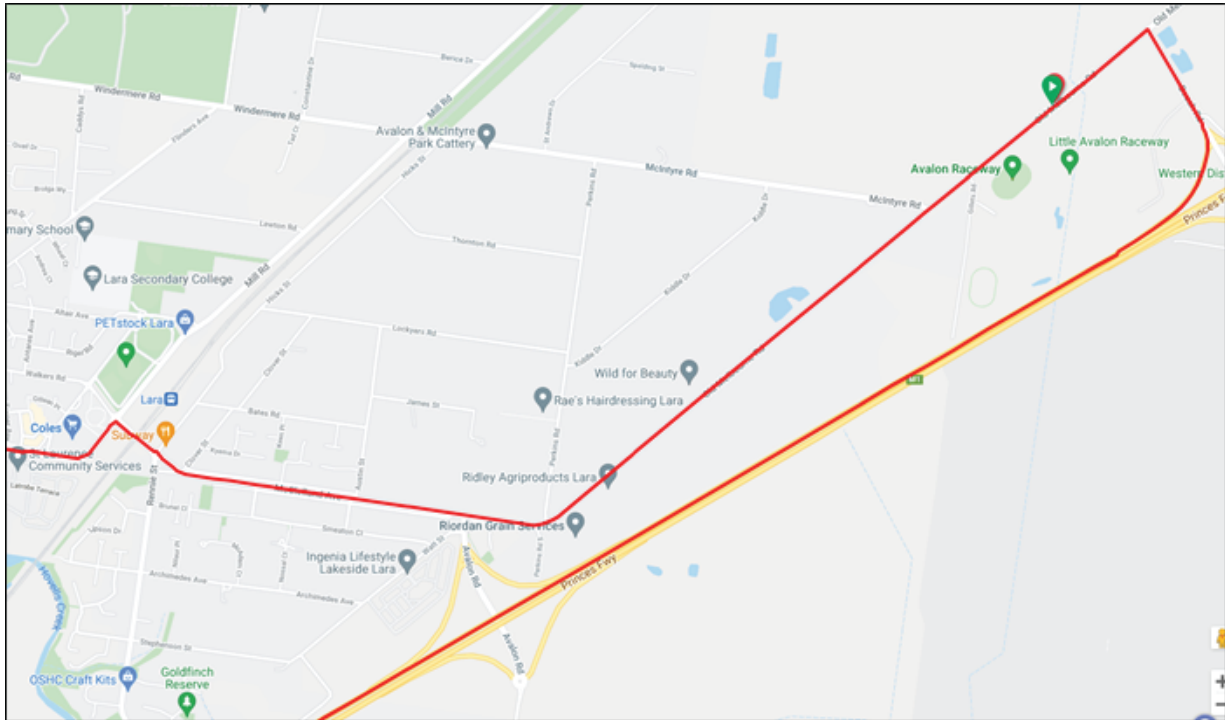
## AVALON RACEWAY 210 Old Melbourne Road







# Course Detailed 1/9

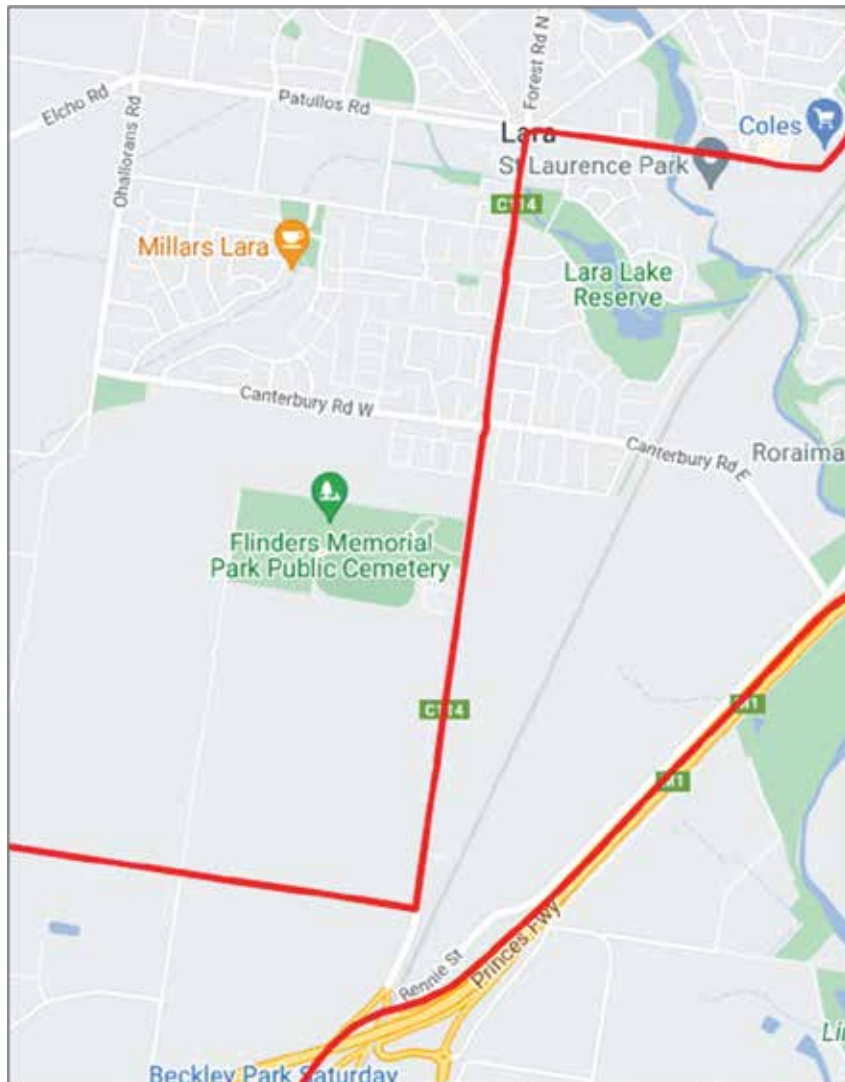


KM	DIRECTION	AT	ONTO
0.0	LEFT	AVALON RACEWAY EXIT	OLD MELBOURNE ROAD
2.8	KEEP STRAIGHT	BEND	MCCLELLAND AVENUE
4.6	CROSS	RAILWAY CROSSING	MCCLELLAND AVENUE
4.7	LEFT (1st exit)	ROUNDAABOUT	STATION LAKE ROAD





## Course Detailed 2/9

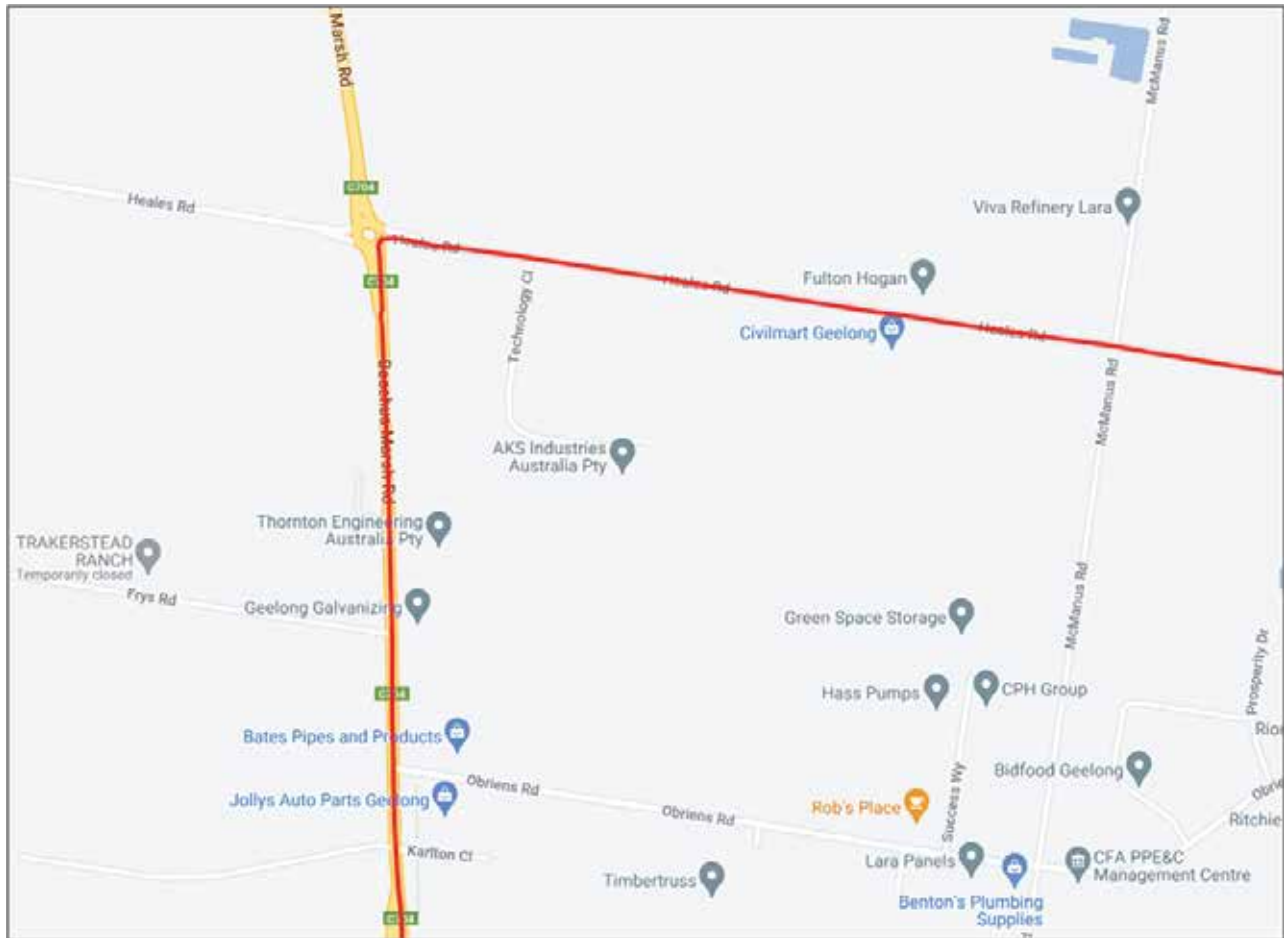


KM	DIRECTION	AT	ONTO
6.2	LEFT (1st exit)	ROUNABOUT	FOREST ROAD SOUTH
9.5	RIGHT	INTERSECTION	HEALES ROAD



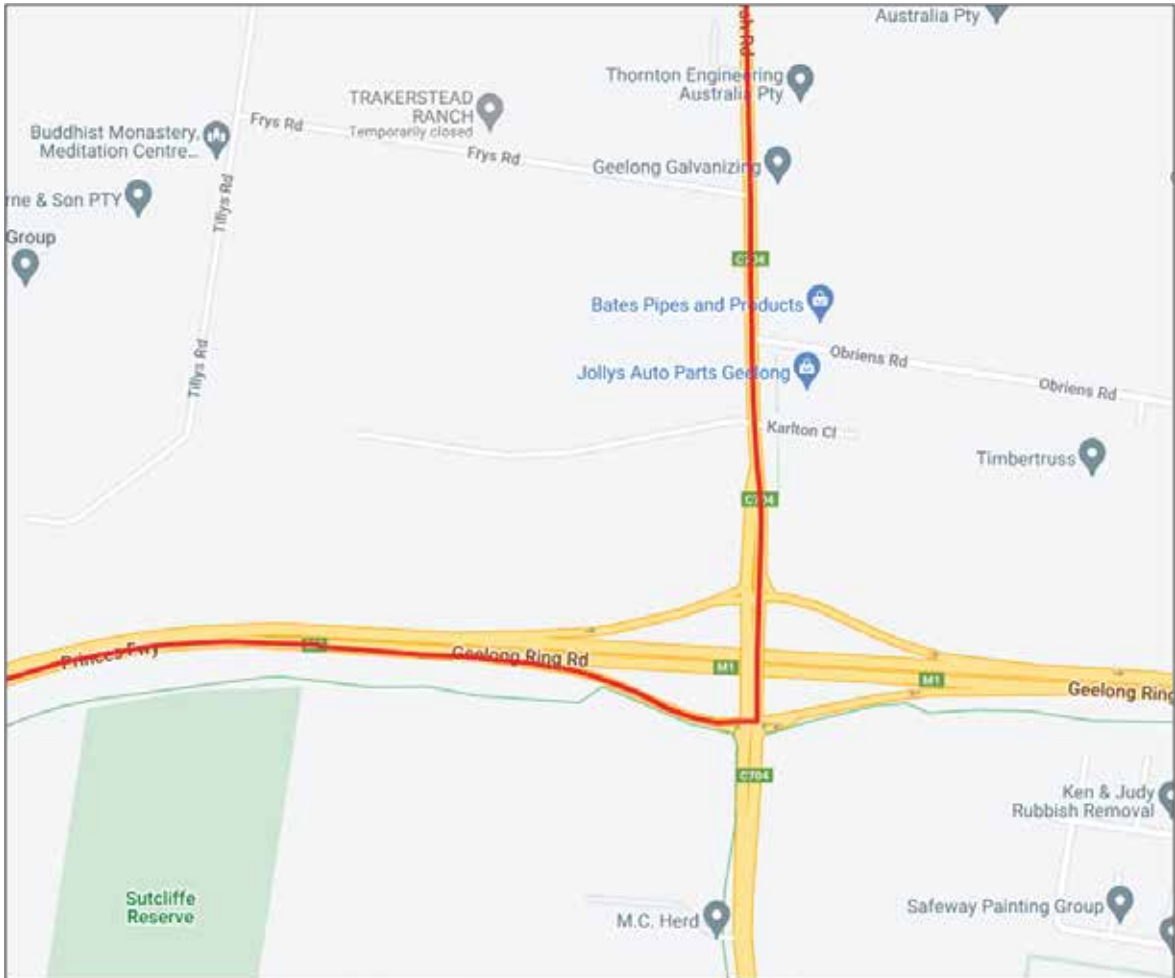


## Course Detailed 3/9



KM	DIRECTION	AT	ONTO
12.4	LEFT (1st exit)	ROUNDBABOUT	BACCHUS MARSH ROAD (C704)





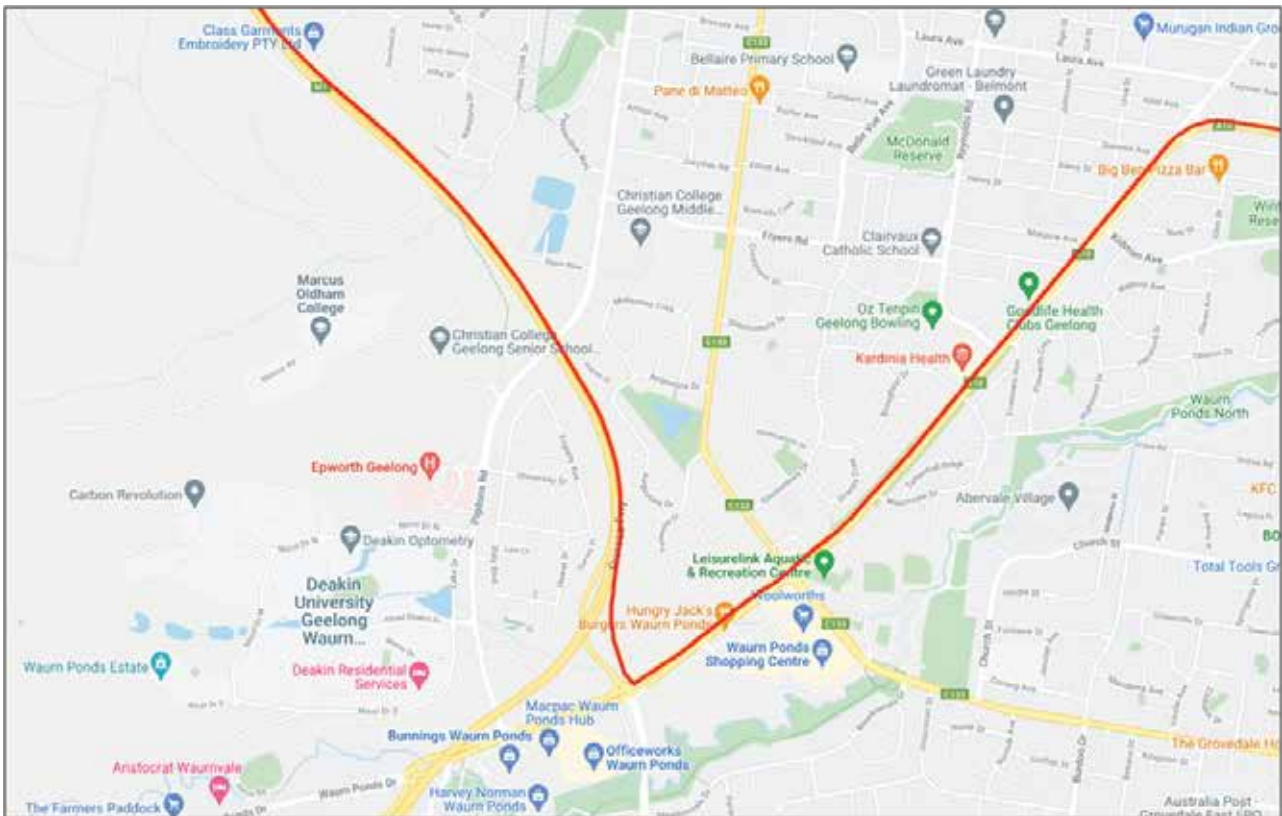
KM	DIRECTION	AT	ONTO
13.8	RIGHT	FREEWAY RAMP	GEELONG RING ROAD (M1)







## Course Detailed 5/9

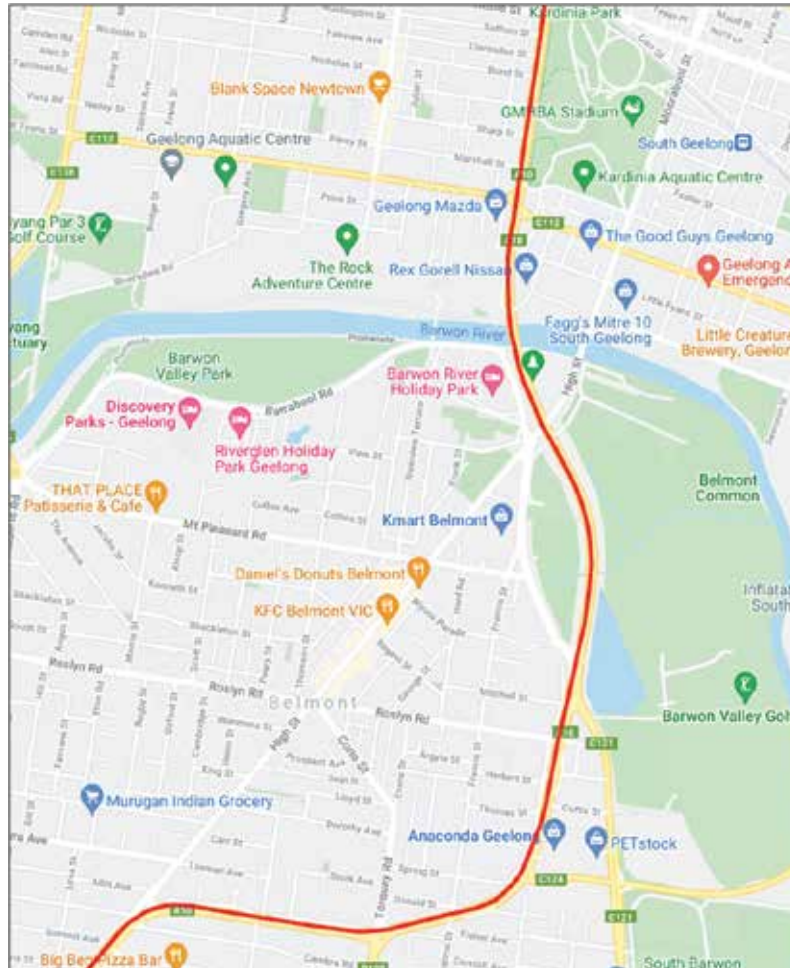


KM	DIRECTION	AT	ONTO
32.3	LEFT	GEELONG RING ROAD (M1)	WAURN PONDS RAMP
32.9	LEFT	END OF RAMP	PRINCES HIGHWAY (A10 / COLAC ROAD)





## Course Detailed 6/9

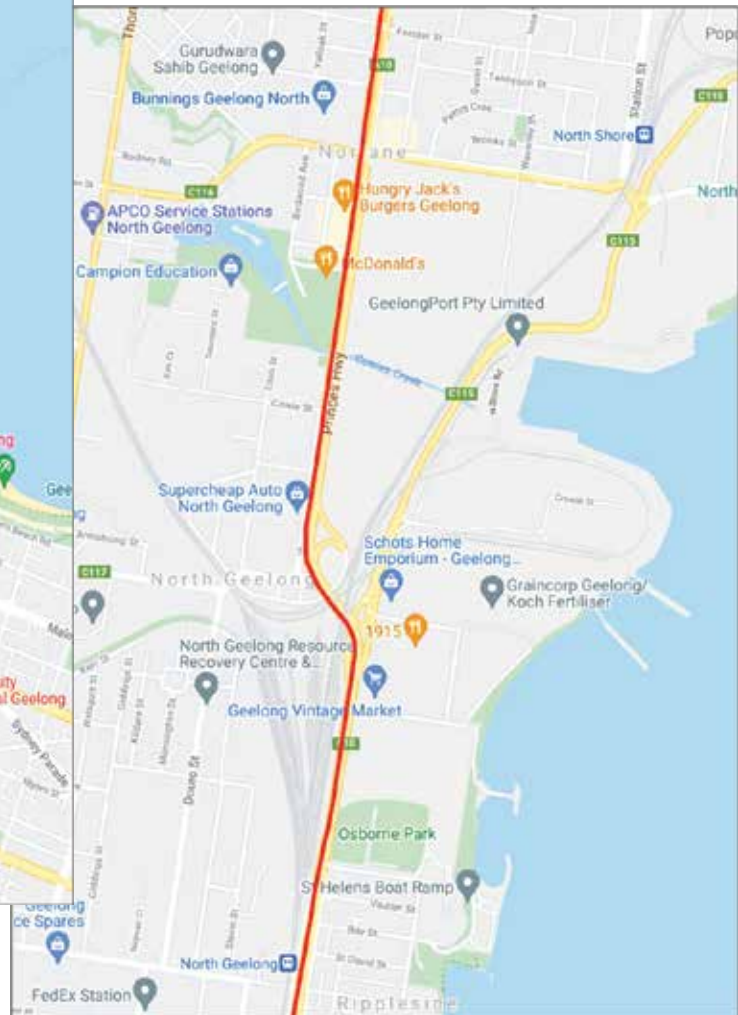


KM	DIRECTION	AT	ONTO
35.8	VEER RIGHT	FORK	PRINCES HIGHWAY (A10) / SETTLEMENT ROAD
38	KEEP STRAIGHT	INTERSECTION	PRINCES HIGHWAY (A10) / SETTLEMENT ROAD
39	CROSS	BARWON RIVER	PRINCES HIGHWAY (A10) / SETTLEMENT ROAD





## Course Detailed 7/9



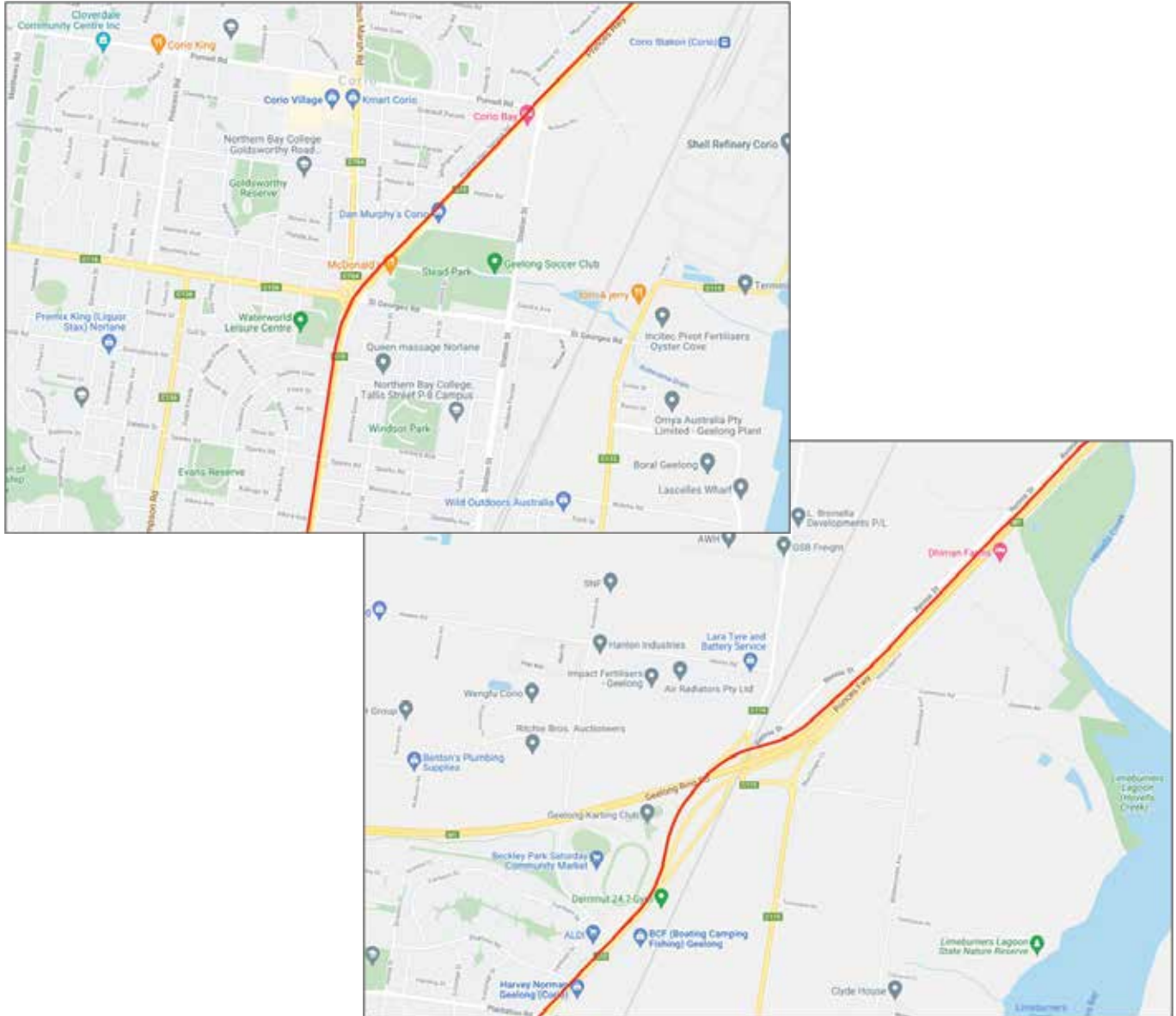
KM	DIRECTION	AT	ONTO
44.9	KEEP STRAIGHT	CORIO QUAY TURN OFF (C115)	PRINCES HIGHWAY (A10)







## Course Detailed 8/9



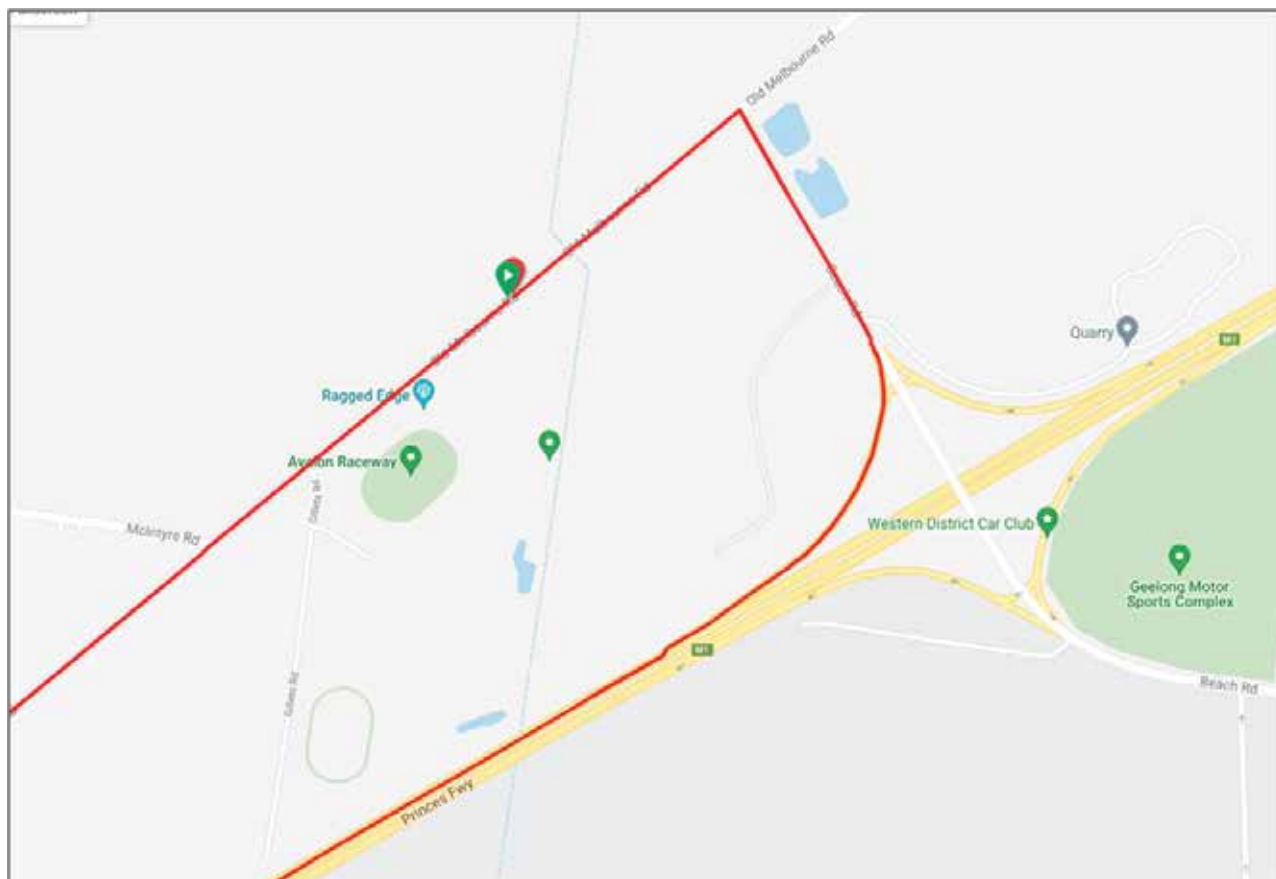
KM	DIRECTION	AT	ONTO
51.5	KEEP STRAIGHT	LARA TURN OFF (C114)	PRINCES HIGHWAY (M1)







## Course Detailed 9/9



KM	DIRECTION	AT	ONTO
60.0	LEFT	LITTLE RIVER / AVALON AIRPORT EXIT RAMP	LITTLE RIVER / AVALON AIRPORT EXIT RAMP
61.1	LEFT	LITTLE RIVER / AVALON AIRPORT EXIT RAMP	BEACH ROAD
61.4	LEFT	INTERSECTION	OLD MELBOURNE ROAD
62.0	LEFT	AVALON RACEWAY ENTRANCE	AVALON RACEWAY

